

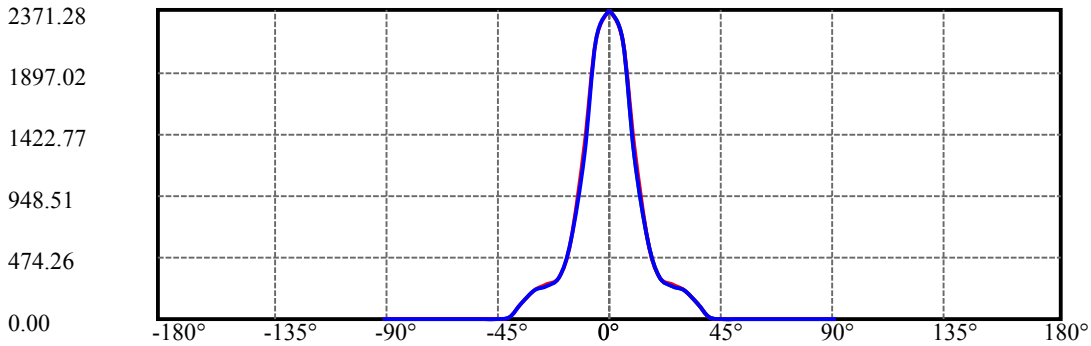
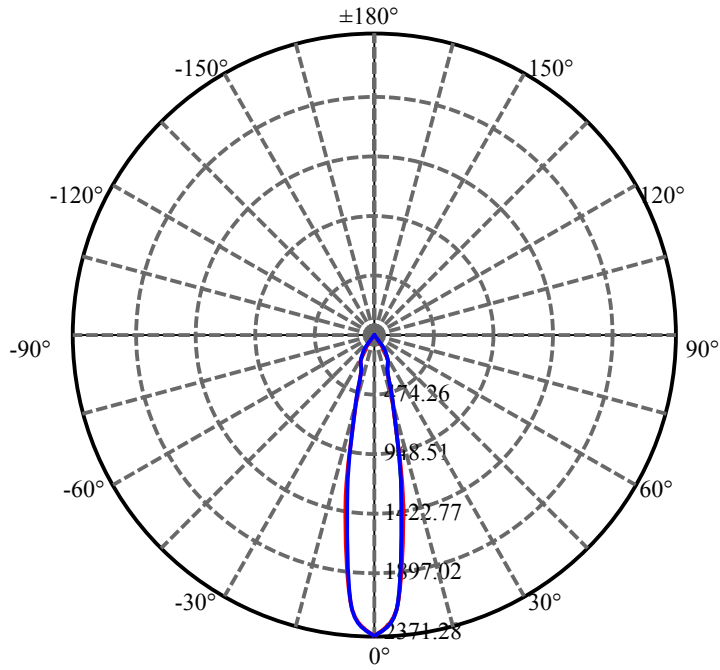
$\gamma(^{\circ})$	Average I(cd)	Zonal F(lm)	Sum F(lm)	Eff Flux(%)	Eff Sum(%)
0.0	2370.729	14.177	14.177	2.305%	2.548%
5.0	2124.626	101.500	115.678	16.504%	20.788%
10.0	1287.067	122.507	238.185	19.920%	42.804%
15.0	601.360	85.314	323.499	13.872%	58.135%
20.0	325.129	60.953	384.452	9.911%	69.089%
25.0	257.444	59.638	444.09	9.697%	79.806%
30.0	222.180	60.893	504.982	9.901%	90.749%
35.0	115.722	36.383	541.365	5.916%	97.287%
40.0	8.465	2.982	544.348	.485%	97.823%
45.0	3.049	1.182	545.529	.192%	98.036%
50.0	2.822	1.185	546.714	.193%	98.248%
55.0	2.663	1.196	547.91	.194%	98.463%
60.0	2.595	1.232	549.141	.200%	98.685%
65.0	2.567	1.275	550.417	.207%	98.914%
70.0	2.546	1.312	551.728	.213%	99.150%
75.0	2.546	1.348	553.077	.219%	99.392%
80.0	2.505	1.352	554.429	.220%	99.635%
85.0	2.491	1.360	555.789	.221%	99.879%
90.0	2.450	0.671	556.461	.109%	100.000%

ZONAL LUMEN SUMMARY

Zone	Lumens	%Lamp	%Fixt
0-30	504.98	82.11%	90.75%
0-40	544.35	88.51%	97.82%
0-60	549.14	89.29%	98.68%
0-90	555.79	90.37%	99.88%
0-120	555.79	90.37%	99.88%
0-180	556.46	90.48%	100.00%
60-90	7.88	1.28%	1.42%
90-120	0.00	0.00%	0.00%
90-130	0.00	0.00%	0.00%
90-150	0.00	0.00%	0.00%
90-180	0.00	0.00%	0.00%
0-25.09	445.17	72.39%	80.00%

ZONAL LUMEN SUMMARY

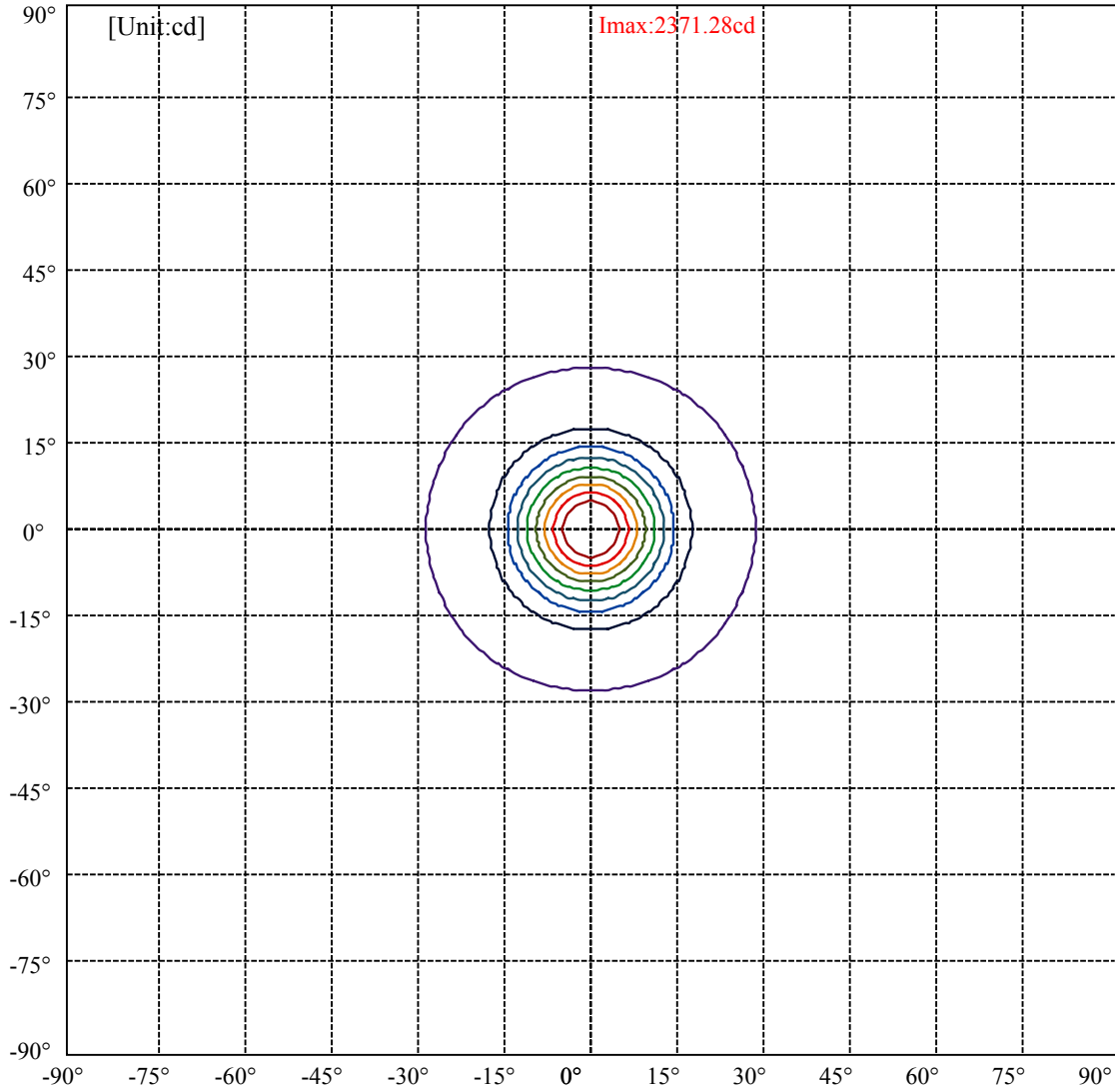
0-10	238.18
10-20	146.27
20-30	120.53
30-40	39.37
40-50	2.37
50-60	2.43
60-70	2.59
70-80	2.70
80-90	1.36
90-100	0.00
100-110	0.00
110-120	0.00
120-130	0.00
130-140	0.00
140-150	0.00
150-160	0.00
160-170	0.00
170-180	0.00



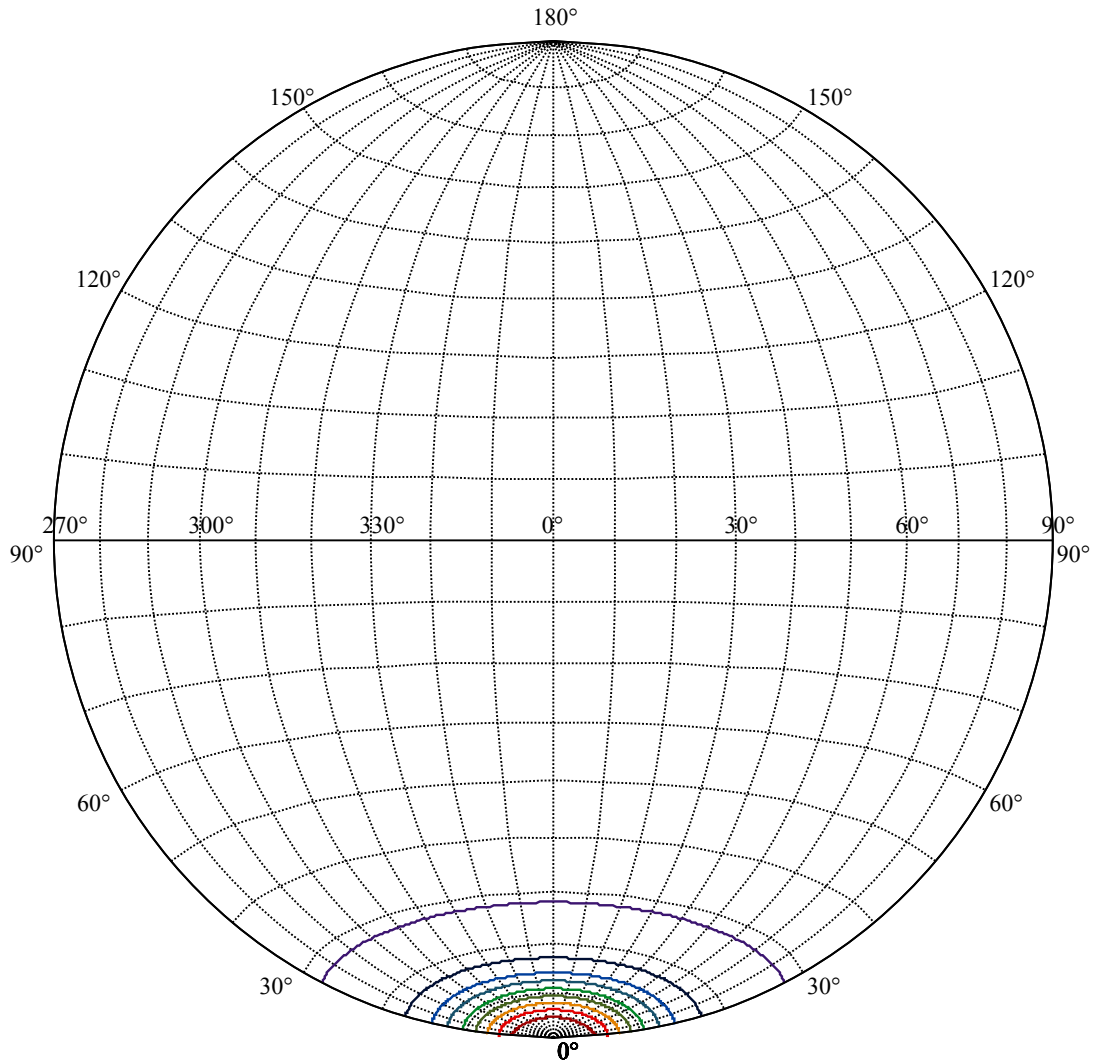
C90(Max): ———
C0/C180: ———
C90/C270: ———

Field angle(10%Imax):C0/180Left:28.3 Right:28.3
:C90/270Left:27.7 Right:27.7

Beam Angle(50%Imax):C0/180Left:11.0 Right:11.0
:C90/270Left:10.5 Right:10.5



(10%Imax) 237.128	—
(20%Imax) 474.256	—
(30%Imax) 711.384	—
(40%Imax) 948.512	—
(50%Imax) 1185.64	—
(60%Imax) 1422.77	—
(70%Imax) 1659.9	—
(80%Imax) 1897.02	—
(90%Imax) 2134.15	—



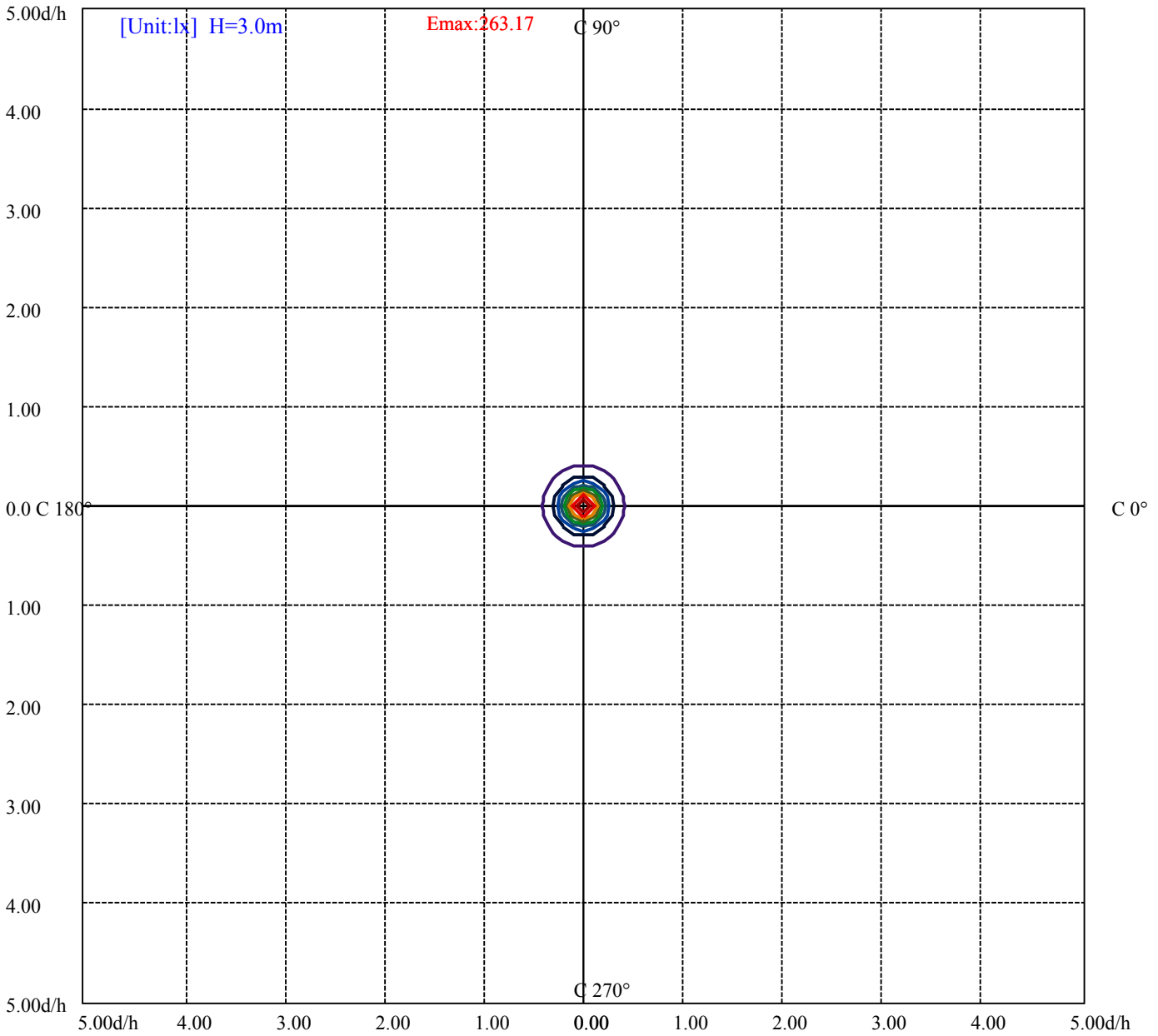
House

[Unit:cd]

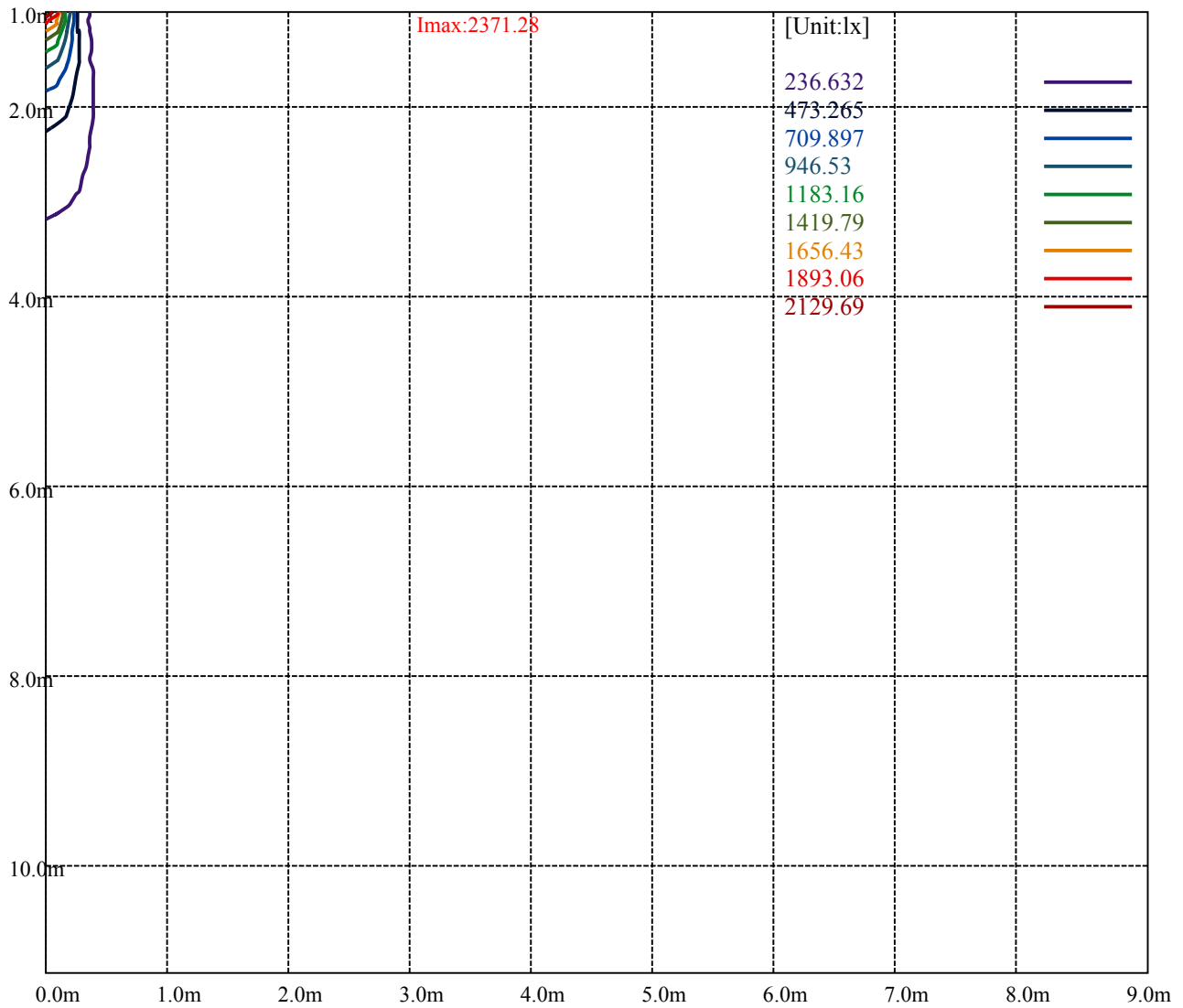
Road

Imax:2371.28

(10%Imax)	237.678	—
(20%Imax)	475.357	—
(30%Imax)	713.035	—
(40%Imax)	950.714	—
(50%Imax)	1188.39	—
(60%Imax)	1426.07	—
(70%Imax)	1663.75	—
(80%Imax)	1901.43	—
(90%Imax)	2139.11	—



(10%Emax) 26.31689	—
(20%Emax) 52.63378	—
(30%Emax) 78.95067	—
(40%Emax) 105.2676	—
(50%Emax) 131.5844	—
(60%Emax) 157.9011	—
(70%Emax) 184.2178	—
(80%Emax) 210.5356	—
(90%Emax) 236.8522	—



Luminance Table

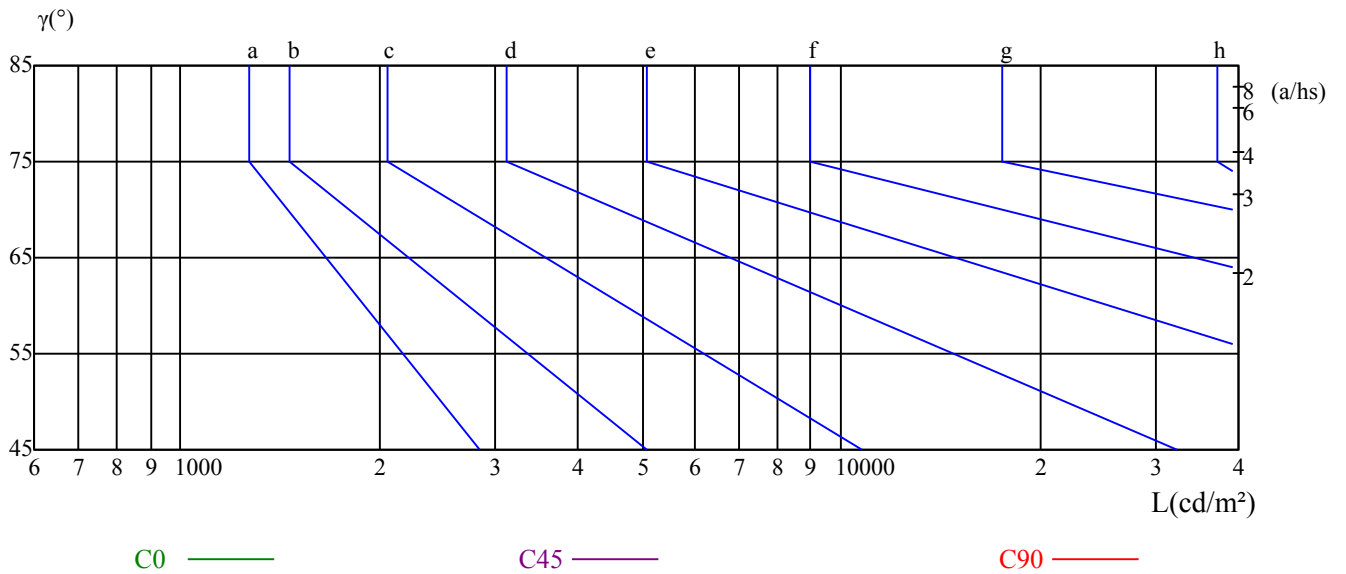
γ	45	50	55	60	65	70	75	80	85
C0	0	0	0	0	0	0	0	0	0
C45	0	0	0	0	0	0	0	0	0
C90	0	0	0	0	0	0	0	0	0

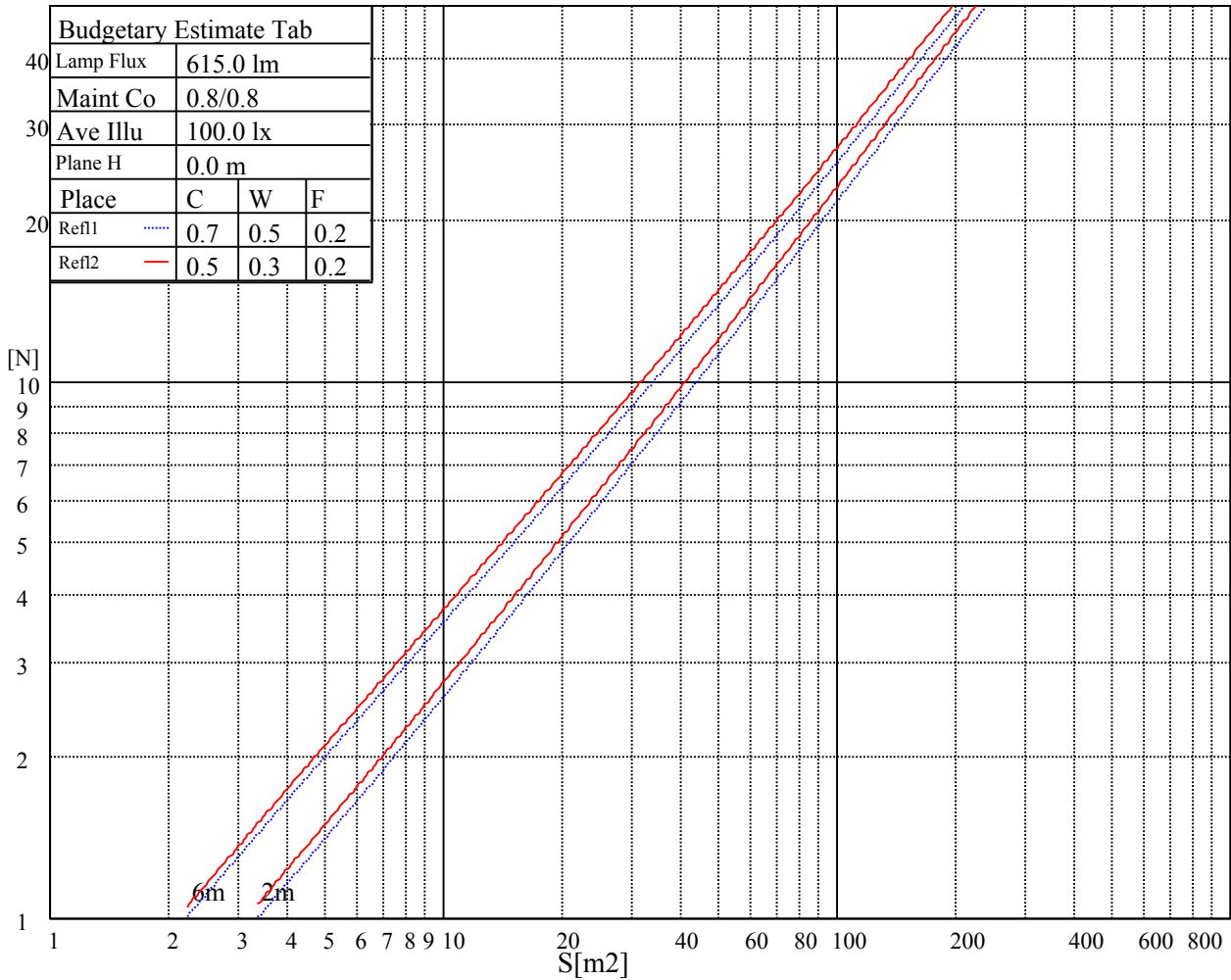
L(Hor)(65)	L(Ver)(65)	L45(65)	L(Hor)(75)	L(Ver)(75)	L45(75)	L(Hor)(85)	L(Ver)(85)	L45(85)
0	0	0	0	0	0	0	0	0

Glare Table

Glare	Quality	Service Values Illuminance(lx)							
1.15	A	2000	1000	500	<=300				
1.5	B		2000	1000	500	<=300			
1.85	C			2000	1000	500	<=300		
2.2	D				2000	1000	500	<=300	
2.55	E					2000	1000	500	<=300
		a	b	c	d	e	f	g	h

Luminance Limiting Curve





RHOCC	80			70			50			30			10			0
RHOW	50	30	10	50	30	10	50	30	10	50	30	10	50	30	10	0
RCR	COEFFICIENTS OF UTILIZATION RHOF=20 CU															
0	1.10	1.10	1.10	1.08	1.08	1.08	1.03	1.03	1.03	0.99	0.99	0.99	0.95	0.95	0.95	0.93
1	1.01	0.98	0.96	0.99	0.97	0.95	0.95	0.93	0.92	0.92	0.90	0.89	0.89	0.87	0.86	0.85
2	0.96	0.92	0.89	0.94	0.91	0.88	0.91	0.89	0.86	0.89	0.86	0.85	0.86	0.84	0.83	0.81
3	0.92	0.87	0.84	0.90	0.87	0.83	0.88	0.85	0.82	0.86	0.83	0.81	0.84	0.82	0.80	0.78
4	0.88	0.83	0.80	0.87	0.83	0.80	0.85	0.81	0.79	0.83	0.80	0.78	0.81	0.79	0.77	0.76
5	0.84	0.80	0.77	0.83	0.79	0.76	0.82	0.78	0.76	0.80	0.77	0.75	0.79	0.76	0.74	0.73
6	0.81	0.77	0.74	0.80	0.76	0.73	0.79	0.76	0.73	0.78	0.75	0.72	0.77	0.74	0.72	0.71
7	0.78	0.74	0.71	0.78	0.74	0.71	0.77	0.73	0.70	0.76	0.73	0.70	0.75	0.72	0.70	0.69
8	0.76	0.72	0.69	0.75	0.71	0.69	0.75	0.71	0.68	0.74	0.70	0.68	0.73	0.70	0.68	0.67
9	0.74	0.69	0.67	0.73	0.69	0.66	0.72	0.69	0.66	0.72	0.68	0.66	0.71	0.68	0.66	0.65
10	0.71	0.67	0.65	0.71	0.67	0.65	0.70	0.67	0.64	0.70	0.67	0.64	0.69	0.66	0.64	0.63

Intensity data(cd)

C/γ(°)	0.0	5.0	10.0	15.0	20.0	25.0	30.0	35.0	40.0
0.0	2366.32	2225.38	1587.28	704.72	354.56	279.14	230.08	148.27	10.68
45.0	2368.53	2204.46	1562.50	670.59	350.16	265.04	225.68	159.22	10.13
90.0	2371.28	2119.12	1071.45	552.66	314.48	245.83	217.97	104.33	7.87
135.0	2376.78	2122.42	1466.70	621.04	327.04	258.05	220.06	122.89	9.86
180.0	2366.32	2038.19	1072.33	504.21	296.20	246.93	216.87	74.55	6.11
225.0	2368.53	2054.15	1089.51	547.70	306.39	251.83	218.79	79.12	6.77
270.0	2371.28	2143.90	1428.16	640.86	339.70	263.39	226.94	135.77	8.86
315.0	2376.78	2089.39	1018.60	569.12	312.50	249.35	221.05	101.63	7.43
360.0	2366.32	2225.38	1587.28	704.72	354.56	279.14	230.08	148.27	10.68

C/γ(°)	45.0	50.0	55.0	60.0	65.0	70.0	75.0	80.0	85.0
0.0	3.14	2.86	2.70	2.59	2.53	2.48	2.48	2.48	2.48
45.0	3.14	2.92	2.70	2.64	2.59	2.53	2.53	2.48	2.48
90.0	3.03	2.86	2.64	2.59	2.53	2.48	2.59	2.53	2.53
135.0	3.03	2.81	2.70	2.59	2.59	2.53	2.53	2.48	2.48
180.0	2.92	2.75	2.64	2.59	2.53	2.53	2.48	2.53	2.53
225.0	2.97	2.81	2.64	2.59	2.59	2.64	2.70	2.53	2.53
270.0	3.14	2.81	2.64	2.64	2.64	2.64	2.53	2.53	2.42
315.0	3.03	2.75	2.64	2.53	2.53	2.53	2.53	2.48	2.48
360.0	3.14	2.86	2.70	2.59	2.53	2.48	2.48	2.48	2.48

C/γ(°)	90.0
0.0	2.42
45.0	2.53
90.0	2.42
135.0	2.42
180.0	2.42
225.0	2.48
270.0	2.42
315.0	2.48
360.0	2.42